

SHARP

FP-S42 FP-S40

AIR PURIFIER OPERATION MANUAL

ENGLISH

Supported models:

FP-S42

FP-S42E-L

FP-S42L-L

FP-S42M-L

FP-S42V-L

FP-S40

FP-S40E-W/T

FP-S40L-W/T

FP-S40M-W/T

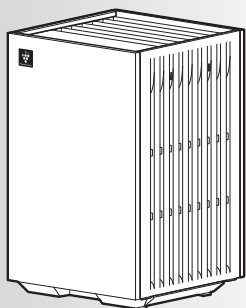
FP-S40P-W/T

FP-S40V-W/T



“Plasmacluster” and “Device of a cluster of grapes” are registered trademarks of Sharp Corporation in Japan, Philippines and elsewhere.

HIGH-DENSITY 7000*



* The number in this technology mark indicates an approximate number of ions supplied into air of 1 cm³, which is measured around the center of a room applicable floor area (at 1.2 m height above the floor) when the product is placed close to a wall at the MAX mode setting.

ENGLISH

Thank you for purchasing the SHARP Air Purifier.
Please read this manual carefully before using the product.
This manual should be kept in a safe place for reference.

CONTENTS

Important Safety Instructions.....	1
Product Overview	3
How To Install	5
How To Operate	6
How To Maintain	9
Troubleshooting	12
Wi-Fi Function.....	14
Specifications	20

For India

At Sharp we understand that our responsibility does not end at selling you our products. Sharp has been working in the area of safe disposal of electronic waste.

Under our Company policy as well the legislation passed by the Ministry of Environment and Forests (MoEF), called E-waste (Management) Rules, 2023, which comes into effect from 1st April 2023,



- Sharp will seek shared responsibility and cooperation from customers in reducing the environmental impact of their products.
 - Sharp will comply with all the applicable laws related to e-waste management
- In case of any queries regarding the proper disposal and/or recycling of electronics, consumers can contact the helpdesk at:

• **Toll Free Number** : 1800-419-4322

• **Email** : ewaste@sharp-oa.com

Also the same information is available on our website:

[In.sharp/b2b/environment-policy](#)

Important Safety Instructions

READ AND SAVE THESE INSTRUCTIONS before using this product.

When using the product, basic safety precautions should always be followed to reduce the risk of fire, electric shock, and injury to persons, including the following:

WARNING

1. The product should only be used for its intended purpose, as described in the manual.
2. This appliance is not intended for use by persons (including children) with reduced physical, sensory or mental capabilities, or lack of experience and knowledge, unless they have been given supervision or instruction concerning use of the appliance by a person responsible for their safety.
Children should be supervised to ensure they do not play with the appliance.
3. Do not repair or disassemble the product by yourself.
4. Never operate the product if the Power Cord, AC Adapter or the product is malfunctioning or damaged.
It must be replaced, repaired or discarded by the manufacturer or a Sharp authorized Service Center or similarly qualified service agent in order to avoid any hazards.
In the event of any problems, adjustments, or repairs please contact the nearest Service Center.
(The following parts of the AC Adapter cannot be replaced and will be discarded.
- The Power Cord, the pins on the plug, the fuse)
5. Follow the instructions below regarding the Power Cord or AC Adapter so as to prevent short circuiting, overheating, electric shocks or fire.
 - a. Use AC 220 - 240 volt outlet only.

(Philippines: Only use the AC 230 volt outlet.)

- b. Only use the AC Adapter of the product.
 - c. Do not use this product's AC Adapter with other products.
 - d. Do not connect to loose or damaged outlets.
 - e. Always turn off the product before unplugging the AC Adapter.
 - f. Always unplug the product in the following cases.
 - Before moving the product.
 - Before opening the Side Panel.
 - Before replacing the filter.
 - Before maintaining the product.
 - When the product is not in use.
 - g. When unplugging the product, be sure to pull out the AC Adapter (holder), and not the Power Cord.
 - h. Keep the AC Adapter dust free.
 - i. Be careful not to damage the Power Cord by observing the following.
 - Do not put heavy things on the Power Cord.
 - Do not forcibly pinch, bend or twist the Power Cord.
 - Do not cover the Power Cord with rugs, etc.
 - Do not run the Power Cord under carpets, furniture or other appliances.
 - To avoid tripping hazards, keep the Power Cord out of a place where people often pass by.
6. Do not use the product near the following locations.
 - a. Near fires. (Gas appliances, fireplaces, lit candles, cigarettes, incense, etc.)
 - b. Locations where the following flammable gases are present.
 - Greasy or oily fumes generated in kitchens
 - Oily residue
 - Chemical fumes, etc.
 - c. Near or on hot areas or where it may come into contact with steam. (Stoves, Heaters, etc.)
 - d. Locations that are wet, damp, or have condensation. (Bathrooms, laundry

ENGLISH

EN-1

- areas, etc.)
7. Keep the room well ventilated when using the product around appliances that produce combustion (gas appliances, etc.). Otherwise it may cause carbon monoxide poisoning.
 8. Do not allow the product to get wet.
 9. Do not insert fingers or foreign objects into the Air Inlet or Air Outlet openings.
 10. Do not place anything on the Air Outlet.
 11. Do not look into the Air Outlets.
 12. Do not sit on, lean on or tilt the product.

CAUTIONS

PRECAUTIONS DURING INSTALLATION

1. Place the product upright on a level and stable surface with sufficient air circulation.
2. Do not place the product on unstable surfaces. (Beds, sofas, heavy carpets, etc.) Doing so may cause the product to tip over.
3. If used for a prolonged period of time, the area around the product may become dirty, so please clean the surrounding walls, floors and rugs regularly. If you are concerned about dirt, move the product away from any surrounding objects.
4. Do not block the Air Inlets or Air Outlets. Be careful not to block them with furniture, curtains, etc.
5. Use under appropriate conditions between 0°C – 35°C.
6. Do not place the product in the following locations. Doing so may cause the product to deform, crack, discolor, or break the sensor.
 - a. Outdoors or in direct sunlight.
 - b. Locations subject to drastic temperature changes.
 - c. Locations where the product would be exposed to direct wind or drafts.

PRECAUTIONS DURING OPERATION

1. Do not operate the product without the

filters properly installed.

2. Always lift the product up when moving it over easily damaged flooring, uneven surfaces, or carpets.
3. When carrying the product, remove the AC Adapter from the product and then hold the Handles on both sides of the product.
4. Do not operate the product in a room where aerosol insecticides are present. As this may cause any insecticide fumes to remain in the product and be emitted from the Air Outlet.
5. Do not use products containing fluororesin or silicone (cosmetics, hair care products, etc.) near this product. The fluororesin or silicone could get stuck inside this product, and cause Plasmacluster Ions cannot be generated.

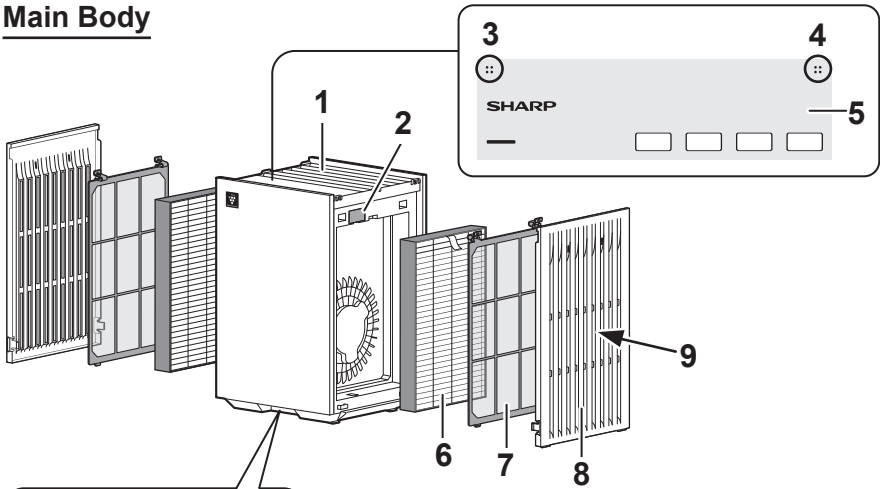
NOTE

Interference with radio or television, etc.

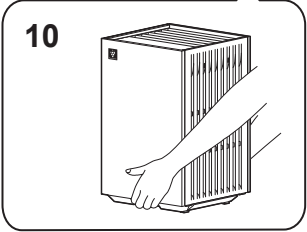
If the product causes interference with the reception of radio, television or radio-controlled clocks, then increase the distance between the product and the device in question.

Product Overview

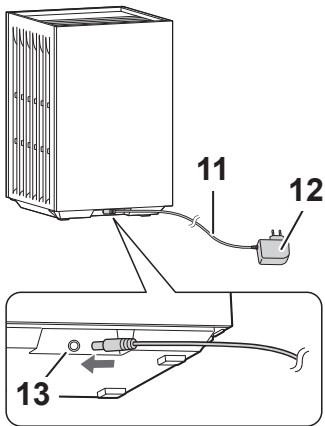
Main Body



ENGLISH



Rear View

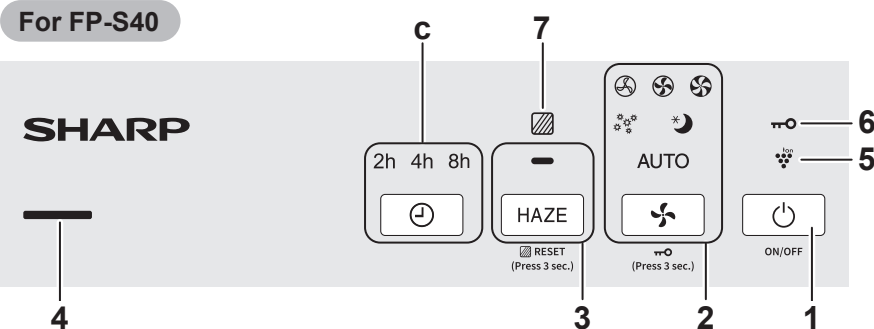
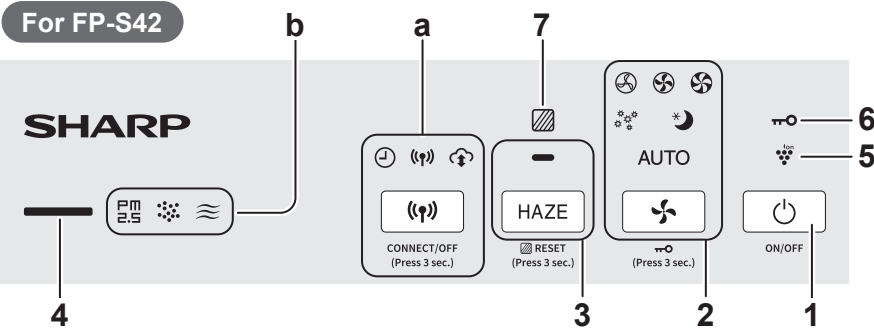


1	Air Outlet
2	Sensor Filter Only FP-S42
3	Odor Sensor *
4	Temperature and Humidity Sensor * Only FP-S42
5	Operation Panel
6	Two in one HEPA and Deodorizing Filter **
7	Pre-Filter **
8	Side Panel **
9	Air Inlet **
10	Handle (Located on the front and rear of the product)
11	Power Cord
12	AC Adapter (The shape of AC Adapter depends on the country.)
13	AC Adapter Connector

* Inside view of the product

** Located on the left and right of the product.

Operation Panel



1	Power ON/OFF Button
2	Mode Button, Indicators
3	HAZE Button, Indicator
4	<p>Cleanliness Indicator</p> <ul style="list-style-type: none"> Indicates the air purity of the room in 5 levels by color changes. (For FP-S40, there are only 4 levels.) <p>Clean Blue</p> <p>↕</p> <p>Impure Yellow (Flashing)</p> <p> Red (Rapid flashing)</p>
5	Plasmacluster Ion Indicator (Blue)
6	Child-Lock Indicator
7	Filter Replacement Indicator (Red)

Only FP-S42

a	Button and Indicator for Wi-Fi function (See Page 16)
b	<p>Odor Indicator</p> <ul style="list-style-type: none"> Indicates the product detects odor. <p>Dust Indicator</p> <ul style="list-style-type: none"> Indicates the product detects usual dust. <p>PM2.5 Indicator</p> <ul style="list-style-type: none"> Indicates the product detects microscopic dust.

Only FP-S40

c	Timer Button, Indicators
---	--------------------------

How To Install

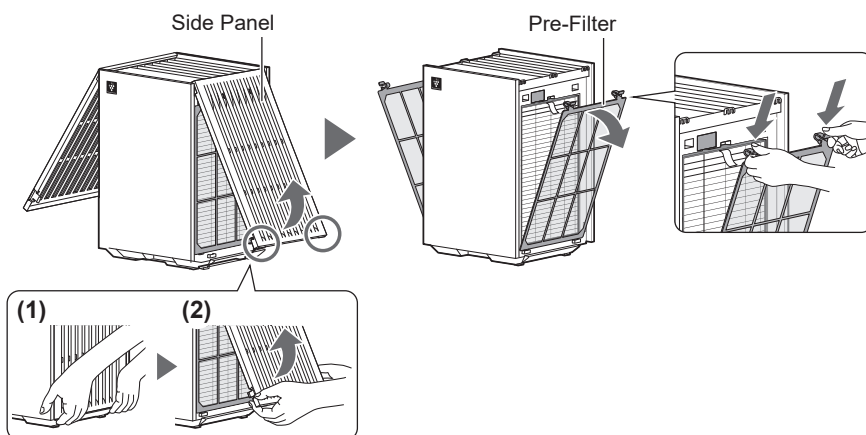
NOTE

Make sure to turn off and unplug the product before installing the filters.

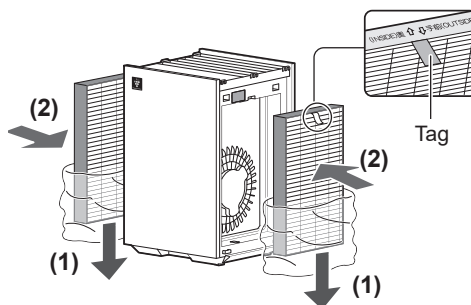


ENGLISH

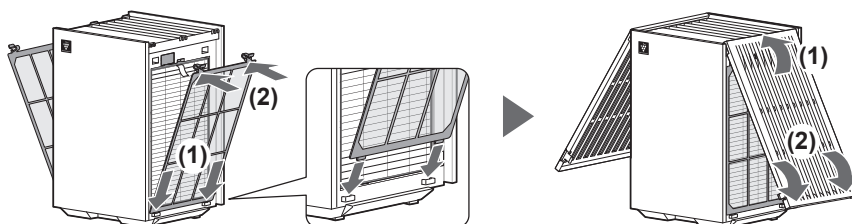
1. Remove the Side Panels and the Pre-Filters.



2. Take out the filters from the plastic bags and then install the filters.



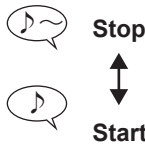
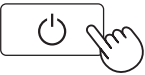
3. Install the Pre-Filters and the Side Panels.



EN-5

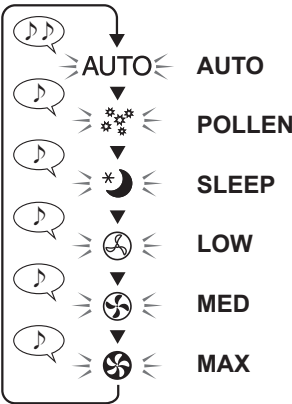
How To Operate

Start/Stop



When the product starts up, it will operate in the previous mode it was running in.

Fan speed



AUTO:

The fan speed is automatically switched depending on the amount of impurities in the air.

POLLEN:

The Sensor sensitivity is increased automatically to detect dirt in the air quickly, and the product powerfully cleans the air.

SLEEP:

The product will operate quietly, and the fan speed will automatically be switched depending on the amount of impurities in the air.

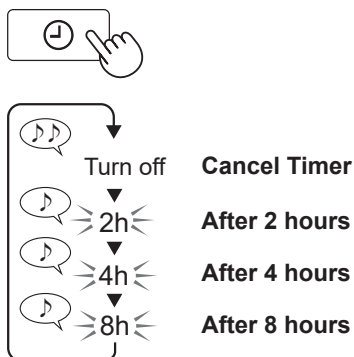
The Operation Panel and Cleanliness Indicator will automatically turn off. (However, some indicators required for notifications will remain dim.)

HAZE mode



After the fan has operated for 60 minutes on high speed, it will alternate between operating at low speed and operating at high speed for 20 minutes at each fan speed.

Timer Only FP-S40



You can set the Timer ON (or OFF) using the operation method described on the left while the product is stopped (or while it is running).

- After the Timer ON (or OFF) is set, the remaining time indicator lights up and the product automatically starts (or stops) once the selected time is reached.
- To cancel the Timer, press the Timer Button to turn off the Timer Indicator.

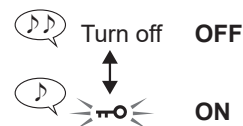
Child-Lock

(with the product powered ON or OFF)



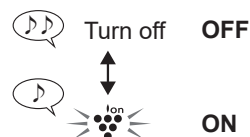
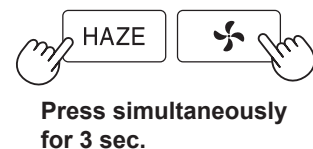
The Operation Panel is locked while the Child-Lock is set to ON.

- You can turn Wi-Fi off even while Child-Lock is ON. (Only FP-S42)



Switching Plasmacluster Ion

(with the product powered ON)



Additional function

The following functions can be set.

Light control

- You can change the brightness of the Operation Panel to ON or OFF. If it is set to OFF, some indicators required for notifications will remain dim.

Sensor sensitivity

Auto restart

- If the product is unplugged or if there is a power failure, the product will resume operation with the previous settings after power is restored.

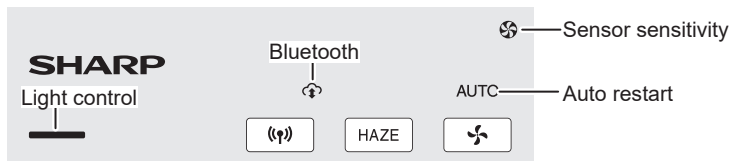
Bluetooth **Only FP-S42**

1. Enter the setting mode.

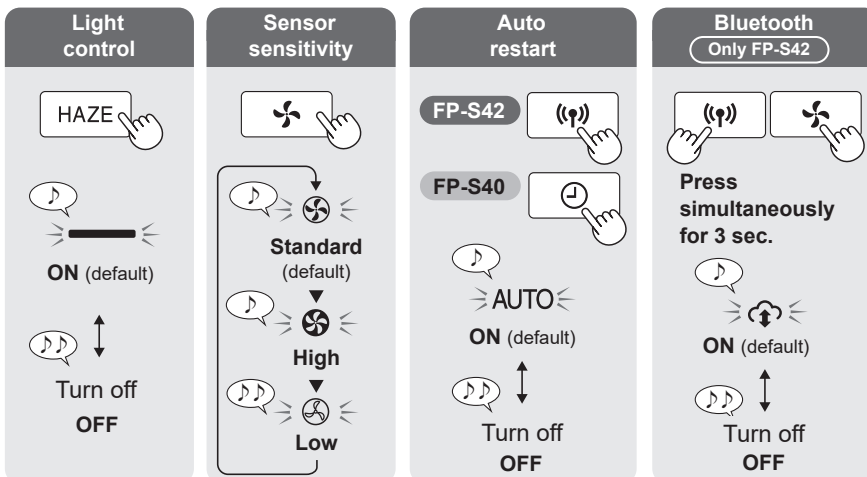
(with the product powered OFF)



The indicator lights up and displays the current settings. (Example FP-S42)



2. Change settings.



3. Exit settings.



- If the power ON/OFF Button is not pressed within 8 seconds, the settings will be saved automatically.

How To Maintain

NOTE

Make sure to turn off and unplug the product before cleaning the product and replacing the filters.



Do not use detergents other than those that are mentioned in this manual.

- Do not clean the product with volatile fluids.

(Benzene, paint thinner, polishing powder or grease, etc.)

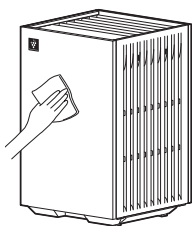
Using these items may cause damage or discoloration of the product or sensor malfunction.

Maintenance cycle: Once a month

- However, please clean the Two in one HEPA and Deodorizing Filters in the following cases.
 - Whenever dust accumulates.
 - When odor emanates from the Air Outlet.

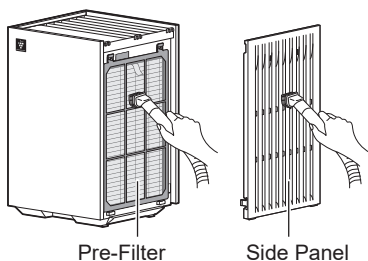
ENGLISH

Main Body



Wipe with a dry, soft cloth.

Side Panels and Pre-Filters



Pre-Filter

Side Panel

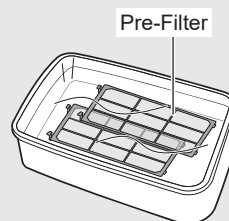
Gently remove dust with a cleaning tool such as a vacuum cleaner.

- Do not use force when cleaning the Pre-Filter.

NOTE

How to Clean Stubborn Dirt

1. Add a small amount of mild kitchen detergent to water and soak for about 10 minutes.
2. Rinse off the detergent with clean water.
3. Allow the filter to dry completely in a well-ventilated area.

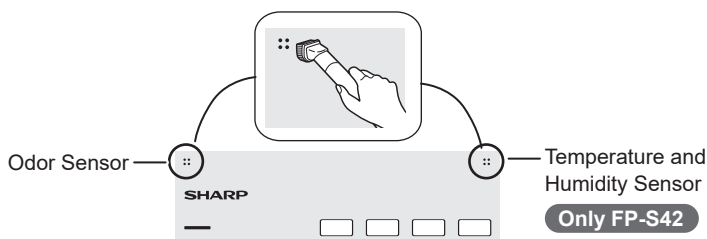


Pre-Filter

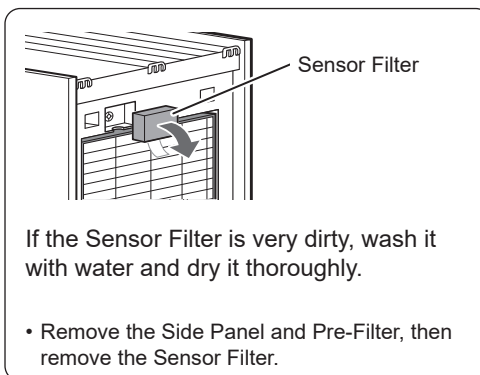
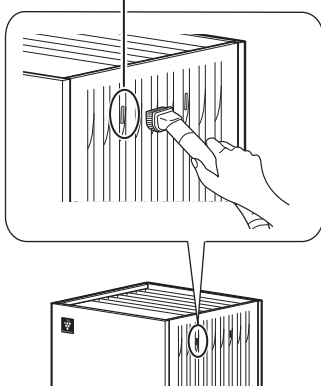
EN-9

Sensors

Remove the dust gently with a cleaning tool such as a vacuum cleaner.



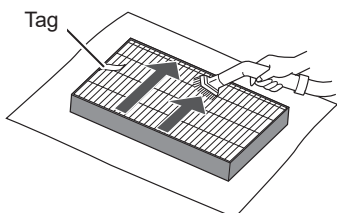
Sensitive Dust Sensor **Only FP-S42**



Two in one HEPA and Deodorizing Filters

NOTE

Do not wash the filter. Do not expose to sunlight. (Otherwise, the filters may lose the effectiveness.)




Only clean the side with tag.

- Do not clean the opposite side (the side without tags).
- The filter is fragile, so be careful not to apply too much pressure.

When to replace the filters

When the Filter Replacement Indicator flashes, replace the filters.

	Slow flashing	Replace the filters.
	Rapid flashing	Replace the filters immediately.

ENGLISH

Replace the filters according to the instructions on Page 5.
Then, follow the steps below to reset (turn off) the Filter Replacement Indicator.

(1) Connect the AC Adapter to the outlet and power on the product.

(2)



**Press
for 3 sec.**



Turn off

**Reset setup is
completed.**

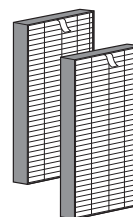
NOTE

- Replacement cycles vary depending on usage conditions and usage environments.
- Some odors absorbed by the filters will break down over time, causing additional odors. Depending on usage conditions, and especially if the product is used in environments significantly more severe than a normal household, these odors may become noticeable sooner than expected.
Replace the filter in those cases or if dust is unable to be removed after maintenance.

Replacement model

Two in one HEPA and Deodorizing Filter FZ-S40S2E (2 pieces)

- Use the replacement parts specified in this manual.
- The maximum lifespan is 2 years.
(Maximum lifespan is measured based on the JEM1467 standard of the Japan Electrical Manufacturers' Association.)



Troubleshooting

Before calling for service helpline, please review the Troubleshooting list below, since the problem may not be the product malfunctioning.

Odor and smoke persist.

- Check the filters. If they are still in the plastic bag, take them out from the plastic bag.
- Check the filters. If they appear to be extremely dirty, clean or replace them.

Air discharged from the product has an odor.

- Check the filters. If they appear to be extremely dirty, clean or replace them.

The product does not operate when cigarette smoke is in the air.

- Make sure the product is installed in a location in which the sensors can detect cigarette smoke.
- Check the Sensor Filter. If it is clogged or dirty, clean it. (Page 10)

There is a smell coming from a new product and/or filter.

- Immediately after removing the plastic bag, a slight odor may occur. This odor is not harmful for filter performance or to humans.

The product makes a clicking or ticking sound.

- The product may make clicking or ticking sounds when it is generating ions.

Even though the air quality has changed, the color of the Cleanliness Indicator remains blue. (or remains red)

- The color of the Cleanliness Indicator may not change for a while after the product starts operating.
- Is the Odor Sensor or Sensitive Dust

Sensor blocked by something? Check the sensor area. (Page 3)

- Check the Sensor Filter. If it is clogged or dirty, clean it. (Page 10)
- Adjust the Sensor sensitivity as follows depending on the color of Cleanliness Indicator. (Page 8)
 - If the color continues to be red, set the Sensor sensitivity to LOW.
 - If the color continues to be blue, set the Sensor sensitivity to HIGH.

The Cleanliness Indicator changes color frequently.

- The Cleanliness Indicator automatically changes color when the Odor Sensor or Sensitive Dust Sensor detect impurities. If you are concerned about these changes, you can change the Sensor sensitivity. (Page 8)

The Operation Panel turns off.

- The Operation Panel will turn off in the following cases.
 - Operating in the sleep mode.
 - When the Light Control is set to OFF. (Page 8)

The Filter Replacement Indicator is flashing.

- Replace the filters.
After replacing the filters, reset the Filter Replacement Indicator. (Page 11)

Error Display

The POLLEN Indicator flashes and the product does not operate.

- The product has stopped operating because the filter is not installed correctly. Follow the steps below to clear the error.
 - (1) Press the Power ON/OFF Button to turn the power off.
 - (2) Reinstall the filter correctly.
 - (3) Press the Power ON/OFF Button to turn the power on.

One of the following indicators is flashing.

- **LOW Indicator**
- **AUTO Indicator** **Only FP-S42**
- **MED Indicator** **Only FP-S42**
- Unplug the product, wait one minute, and then plug the product back in.
If error still occurs, then contact the Sharp Service Center.

Wi-Fi Function

Only FP-S42

Safety precautions of the Wi-Fi functions

WARNING

When remotely controlling the air purifier

When operating remotely from outside, you may not be able to check the air purifier's current condition, the area around it or the status of people at home, so please thoroughly confirm everything is safe before use.

1. Make sure the electric plug is fully inserted into a power socket, and there is no dust on the plug or in the socket. (It may cause heat, combustion, fire, etc., due to poor contact or contact failure.)
2. Make sure beforehand to check the ambient environment of the product, because the air flow from the product may have unexpected affects (such as unstable items falling down), and this may result in fires, injuries, and breakage of house items.

CAUTION

Precautions for using the Wi-Fi function

1. To use the app, you must agree to the "Terms of Service".
2. Ensure that the app is up to date.
3. The screenshots and diagrams in this book are for explanation. There are some differences compared to the actual product.
4. If the connection is poor, the app may not be able to control the air purifier. The current air purifier operation may not be accurately reflected in the app.
5. It is recommended to lock the screen of your smart device to prevent accidental operation.

6. Communication charges will be incurred when downloading and using the app.

Precautions when using radio waves

1. Usage of the application is not guaranteed under the following environment:
 - a. Near Bluetooth® wireless communications device using the same frequency (2.4GHz) as this product.
 - b. Near a product which emits a magnetic field. (E.g. microwave oven)
 - c. Near a place with static electricity.
 - d. Near a place where radio disturbance occurs.
 - e. Near other wireless communication devices.
2. Wi-Fi connection and performance cannot be guaranteed for all routers or environmental conditions.
3. At the following places, Wi-Fi connection might be unstable:
 - a. Inside of a building made with concrete, reinforcing steel or metal.
 - b. Near obstructions.
 - c. Near wireless communication devices using the same frequency.

Precautions regarding personal information (Security related)

1. If you are using a wireless LAN device, your information can still be intercepted regardless of the encryption settings.
2. Make sure that you use a network that is under your control.
3. Initialize the device when selling, disposing or handing over from/to a third party. See page 18 on how to initialize.

- The Bluetooth® word mark is a registered trademark owned by Bluetooth SIG, Inc.

Usage conditions (As of April 2024)

Broadband internet connection

- Following connection methods cannot be used.
 - Dial up connection
 - Connection that requires ID authentication
- Following connection methods are not guaranteed.
 - Mobile router connection
 - Tethering connection

Smart device (ex: smart phone)

- Minimum software requirements : Android 8 or later / iOS 12 or later

Wi-Fi access point (Router)

Wi-Fi specifications supported by this product

- Frequency: 2.4GHz / 5GHz band (IEEE802.11a/b/g/n)
- Channel:
 - <2.4GHz band> 1-13
 - <5GHz band> W52 (36, 40, 44, 48) / W53 (52, 56, 60, 64) / W56 (100, 104, 108, 112, 116, 120, 124, 128, 132, 136, 140, 141^{*1}) / W58 (149^{*2}, 153^{*2}, 157^{*2}, 161^{*2}, 165^{*2})
- *1: Supports only India (FP-S42M).
- *2: Supports only Malaysia (FP-S42L), Vietnam (FP-S42V) and India (FP-S42M).
- Security protocols: WPA Personal / WPA2 Personal / WPA3 Personal
- Recommended encryption: AES
- Bluetooth 5.0 (Bluetooth Low Energy only support)

NOTE

Please disable the following settings on the router.

- Stealth setting of SSID
- MAC address filtering setting
- Client isolation setting that prohibits Wi-Fi communication between the devices connected to the router.

Intellectual property rights for this product

- The software incorporated in this product consists of the software developed or created by our company and copyrighted by our company, and the free software copyrighted by third parties. For details of the software incorporated in this product, including license conditions, refer to the following URL.
https://jp.sharp/support/cloud/adapter/license_a04.pdf



Trademarks

- “Wi-Fi®” is a registered trademark of Wi-Fi Alliance®.
- “WPA™” and “WPA2™” are trademarks of Wi-Fi Alliance®.
- “Android” is a trademark of Google Inc.
- The other company names, corporate names, product names mentioned in the instructions manual are the trademarks and the registered trademarks of each company.

How to use the Wi-Fi function

Connect with the app (Sharp Air App)

By linking your air purifier with your smart devices, you can enjoy more convenience.

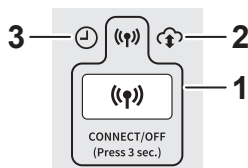
**Scan the QR code to download and install the designated app.
And then follow the steps below for setup.**

https://cboard.cloudlabs.sharp.co.jp/smartapp_asean/download/air/



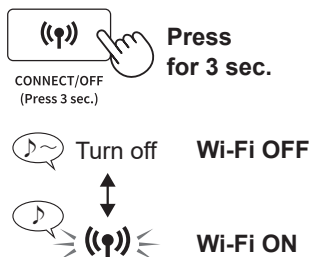
- 1. Launch the app and follow the instructions in the app to make initial settings for the app.**
- 2. To link the app with the air purifier, follow the steps below.**
 - (1) Tap menu button “≡” at the upper left of the app screen.
 - (2) Tap “Register Device”.
 - (3) Tap “Connection with a router” and then follow instructions on the app.

About buttons and indicators related to Wi-Fi function



1	Wi-Fi Button Wi-Fi Indicator <ul style="list-style-type: none">• Light on: Wi-Fi ON• Light off: Wi-Fi OFF• Flashing (Page 19)
2	Cloud Service Indicator <ul style="list-style-type: none">• Illuminates when “Cloud Service” in the designated app is set to ON.
3	Timer Indicator <ul style="list-style-type: none">• Illuminates when a Timer has been set on the product from the designated app.

How to turn Wi-Fi ON/OFF



- About turning on Wi-Fi.
A few moments after you press the Wi-Fi Button, you will hear 4 beeps. After a while, the Wi-Fi Indicator lights on and the Wi-Fi connection is completed. (In this case, Wi-Fi connection with the router will be automatically restored.)

Troubleshooting of the Wi-Fi function

The Wi-Fi connection of the air purifier and the router is not working.

- Check the specifications of the router in use.
- Adjust the router and antenna direction, move the router and antenna closer, and so on. After that, reswitch to turn on the router and set up the Wi-Fi connection of the air purifier and the router again.

The connection between the air purifier and your smart device cannot be established.

- Are the air purifier and your smart device connected to the same router?
Connect the air purifier and your smart device to the same router.
Also, connect your smart device to the 2.4GHz or 5GHz band of the router.
- Have you already registered 10 smart devices to one air purifier?
The maximum number of smart devices that can be registered on one air purifier is 10.
- Have you already registered 30 products (air conditioners, air purifiers, etc.) on one smart device?
The maximum number of products that can be registered with one smart device is 30.

Remote operation from a smart device cannot be performed.

- Has the connection between the air purifier and your smart device been completed?
Set up the connection between the air purifier and your smart device.
- Check the Wi-Fi indicator of the air purifier.
If the Wi-Fi indicator is flashing or off, take action according to the status of the Wi-Fi indicator. (Page 19)
- It may take some time for the Wi-Fi indicator to turn on after you plug the air purifier's AC Adapter into a power outlet.
If the Wi-Fi indicator is not lit, you cannot operate this product from your smart

device.

When changing the router

- Perform the following steps to reconnect the air purifier to a new router.
 1. Hold down the Wi-Fi Button for 3 seconds to stop the Wi-Fi function.
 2. Connect the air purifier with the new router using the app.
 - Tap the app using the steps below.
 - (1) Menu button “ ≡ ”
 - (2) “Register Device”
 - (3) “Connection with a router”

When changing the smart device

- Perform the following steps.
 1. Delete the registration of the old smart device from the app.
 2. Install the app on the new smart device, and then connect the air purifier with the new smart device using the app.
 - Tap the app using the steps below.
 - (1) Menu button “ ≡ ”
 - (2) “Register Device”
 - (3) “Already connected with a router”

When disposing of or handing over the air purifier

- Perform the following steps, to prevent personal information from being disclosed.
 1. Delete the registration of the air purifier from the app.
 2. Initialize the Wi-Fi function of the air purifier. (Page 18)

If you receive an air purifier from a third party

- To prevent unauthorized access from a third party, initialize the Wi-Fi function of the air purifier. (Page 18)

How to initialize the Wi-Fi function

NOTE

When initializing the Wi-Fi function, delete the air purifier registration from the App if it is already registered.

1. Press the Wi-Fi Button for more than 8 seconds.

(with the product powered ON or OFF)



Press for more than 8 sec.

- About 3 seconds after pressing the button, the air purifier will sound a notification tone and the Wi-Fi Indicator will flash or turn off, but keep pressing the button more than 8 seconds.

▼ (After a while)



Flashing

2. Press the Wi-Fi Button again within 2 minutes for more than 3 seconds.



Press for 3 sec.



Flashing

▼ (After a while)



Turn off **Completed**

How to turn the Bluetooth ON/OFF

- For the setting method, see page 8.

About the Wi-Fi Indicator status

Wi-Fi Indicator flashes slowly

- It will be in one of the following status.
 - A. The Wi-Fi connection of the air purifier and a router is in setup.
 - B. The connection of the air purifier and a smart device is in setup.
 - C. The software for the Wi-Fi function in the air purifier is being updated.

Wi-Fi Indicator flashes rapidly

- Network error. Check the following:
 - A. Check the network status of the router.
 - B. After turning off the air purifier, check the Internet status.
 - C. If there are no problems with A and B, then unplug the air purifier. After a while, plug the air purifier back into an electrical outlet and reconnect the air purifier to the router.

Wi-Fi Indicator turns off

- The air purifier cannot connect to the router. Check the following:
 - A. Is the AC Adapter correctly connected?
 - B. Has the Wi-Fi function been stopped?
Connect the air purifier to the router again.

Specifications

Model	FP-S42		
Power Supply	AC Adapter *1		
	Rated Input	AC 100 - 240 V	50 - 60 Hz 0.9 A
	Rated Outlet	DC 24.0 V	1.5 A 36.0 W
Fan Speed Adjustment	MAX	MED	LOW
Fan Speed (m ³ / h)	240	132	48
Rated Power (W)	23	7.1	3.1
Noise Level (dB) *2	46	34	21
Standby Power (W)	1.2 (When Wi-Fi adapter is ON.) 0.8 (When Wi-Fi adapter is OFF.)		
Recommended Room Size (m ²) *3	Up to 30		
High Density Plasmacluster Ion Recommended Room Size (m ²) *4	Up to 23		
Sensors	Sensitive Dust / Odor / Temperature / Humidity		
Filter Type	Two in one HEPA *5 and Deodorizing		
Cord Length (m)	Approx. 2.0		
Dimensions (mm)	235 (W) × 235 (D) × 372 (H)		
Weight (kg)	Approx. 3.9		

	Recommended Room Size *6	CADR		
		Smoke	Dust	Pollen
AHAM	19 m ²	133 cfm (226 m ³ / h)	141 cfm (240 m ³ / h)	152 cfm (258 m ³ / h)
GB	26 m ²	260 m ³ / h *7		

*1 This AC Adapter is a non-inherently short circuit proof transformer.

*2 The noise levels are measured based on the JEM1467 standard of the Japan Electrical Manufacturers' Association.

*3 The recommended room size is appropriate for operating the product of maximum fan speed. The recommended room size is an area in which a given amount of dust particles can be removed in 30 minutes (according to JEM1467).

*4 Room size in which approximately 7000 ions per cubic centimeter can be measured in the center of the room at a height of approximately 1.2 meters from the floor when the

Standby Power

When the product's AC Adapter is inserted in a wall outlet it consumes standby power in order to operate electrical circuits. To conserve energy, unplug the AC Adapter when the product is not in use.

Model	FP-S40		
Power Supply	AC Adapter ^{*1}		
	Rated Input	AC 100 - 240 V 50 - 60 Hz 0.9 A	
	Rated Outlet	DC 24.0 V 1.5 A 36.0 W	
Fan Speed Adjustment	MAX	MED	LOW
Fan Speed (m ³ / h)	240	132	48
Rated Power (W)	23	6.4	2.4
Noise Level (dB) ^{*2}	46	34	21
Standby Power (W)	0.3		
Recommended Room Size (m ²) ^{*3}	Up to 30		
High Density Plasmacluster Ion Recommended Room Size (m ²) ^{*4}	Up to 23		
Sensors	Odor		
Filter Type	Two in one HEPA ^{*5} and Deodorizing		
Cord Length (m)	Approx. 2.0		
Dimensions (mm)	235 (W) × 235 (D) × 372 (H)		
Weight (kg)	Approx. 3.9		

	Recommended Room Size ^{*6}	CADR		
		Smoke	Dust	Pollen
AHAM	19 m ²	133 cfm (226 m ³ / h)	141 cfm (240 m ³ / h)	152 cfm (258 m ³ / h)
GB	26 m ²	260 m ³ / h ^{*7}		

product is placed next to a wall and is running at MAX mode settings

^{*5} The filter removes more than 99.97% of particles at least 0.3 microns in size (according to JEM1467).

^{*6} The recommended room size is appropriate for operating the product at maximum fan speed. (according to ANSI/AHAM AC-1-2020, GB/T 18801-2022)

^{*7} This CADR is tested by a third party based on GB/T 18801-2022 "Air Cleaner" Test Method and is the result of operating at MAX mode setting.

SHARP

SHARP CORPORATION



LOVEAIR

Bedienungsanleitung von loveair.de

TINS-B522KKRZ 24C ①